



European  
Global Navigation  
Satellite Systems  
Agency



EUROPEAN GNSS AGENCY  
HEADQUARTERS (GSA)  
Prague, CZ



GALILEO REFERENCE  
CENTRE (GRC)  
Noordwijk, NL



USERS



EUROPEAN GNSS SERVICE CENTRE (GSC)  
Madrid, ES



GALILEO CONTROL CENTRES (GCC)  
Oberpfaffenhoffen, DE -  
Fucino, IT



GALILEO SECURITY MONITORING CENTRES (GSMC)  
Saint-Germain-en-Laye, FR - Madrid, ES

### GALILEO REFERENCE CENTRE (GRC)

The Galileo Reference Centre (GRC) monitors and reports on Galileo's performance and provides the GSA with an independent means of evaluating the quality of the signals in space and the performance of the Galileo Service.

### EUROPEAN GNSS SERVICE CENTRE (GSC)

The European GNSS Service Centre (GSC) provides the single interface between the Galileo system and users of the Galileo Open Service (OS) and the Galileo Commercial Service (CS). Its mission is to provide general information, distribute timely Service Notices and support Galileo service provision.

### GALILEO CONTROL CENTRES (GCC)

The Galileo Control Centres - GCC-D Germany and GCC-I in Italy - operate and manage the Galileo constellation. The main mission of the GCC-D is to control the satellites in space, while GCC-I main mission is to be responsible for the overall navigation mission, but the centres are fully interchangeable.

### GALILEO SECURITY MONITORING CENTRE (GSMC)

The Galileo Security Monitoring Centre (GSMC) undertakes Galileo Security Monitoring, which involves monitoring and taking action regarding security threats, security alerts and the operational status of system components. It acts as well as the interface to the PRS users.

### GALILEO ILS CENTRE (GILSC)

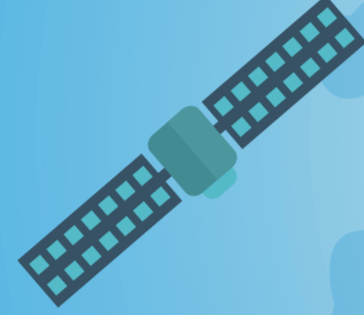
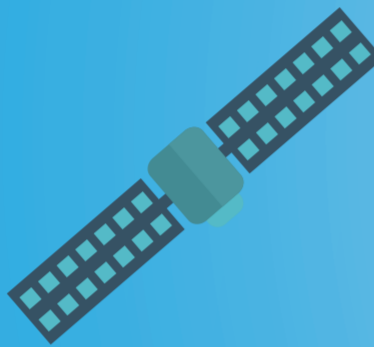
The Galileo ILS Centre supports an efficient spare part and repair provisioning service for Galileo ground infrastructure, and holds a spare part stock for corrective and preventive maintenance.

### GSA HEADQUARTERS

From its Prague headquarters, the GSA manages public interests related to the European GNSS programmes, ensuring that Europeans receive the highest possible return on the European Union's investment in space.

### REMOTE SITES AROUND THE WORLD

The Galileo Ground Mission Segment (GMS) consists of the Galileo Control Centres (GCC) in Italy and Germany and a worldwide network of ground stations, including Galileo Sensor Stations (GSS), which collect Galileo signal in space measurements, Galileo Uplink Stations (ULS), which distribute and uplink mission data to the Galileo constellation, and Telemetry, Tracking & Control stations (TT&C), which collect and forward telemetry data generated by the Galileo satellites.



ULS - TTC -  
GSS REMOTE SITES  
Global



GALILEO ILS  
CENTRE (GILSC)  
Transinne, BE

